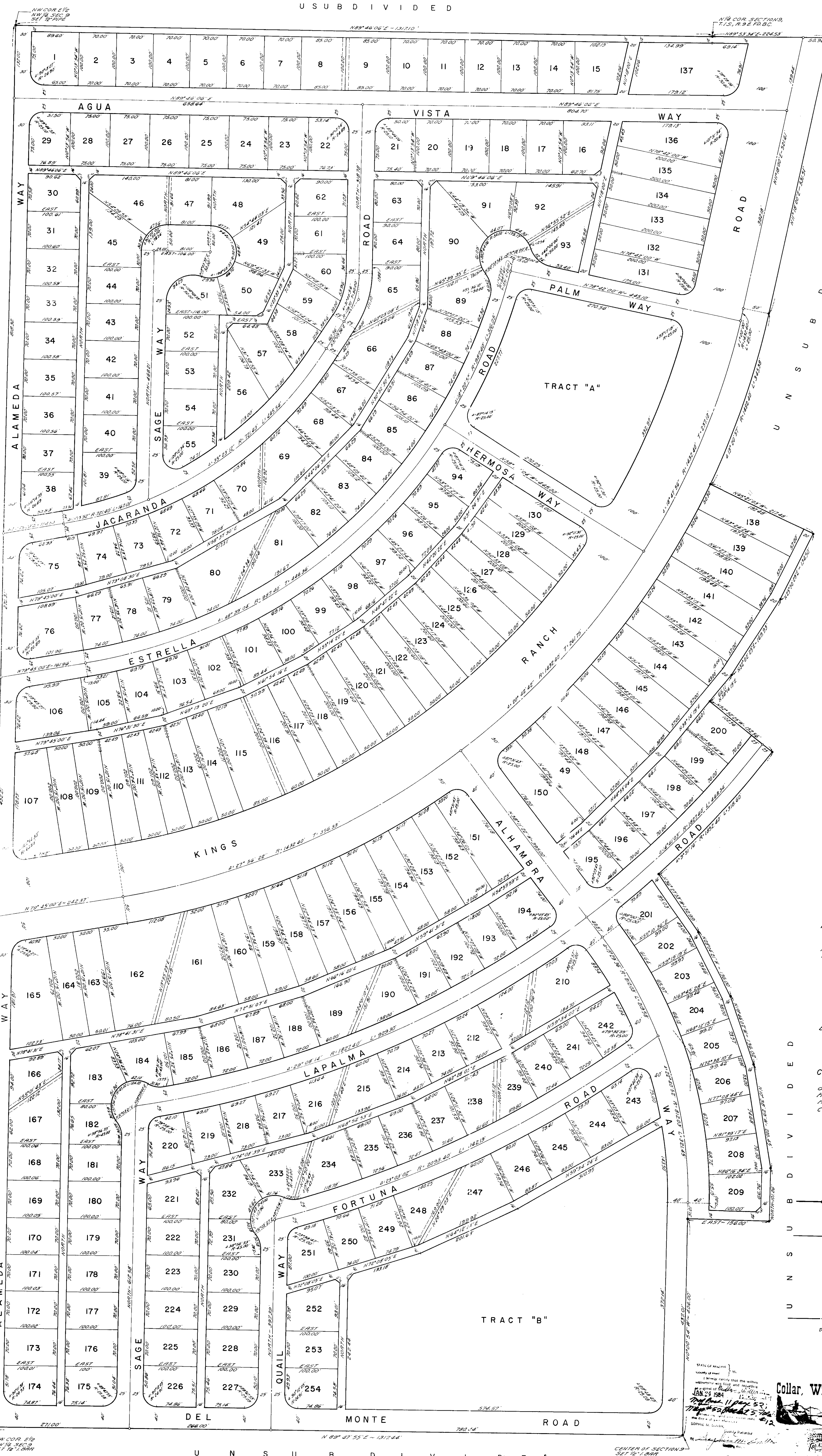


# GOLDEN SPRINGS

A SUBDIVISION OF A PORTION OF  
THE N 1/2, OF SECTION 9, T. 1 S., R. 9 E., G. & S. R. B. & M.  
PINAL COUNTY, ARIZONA

U N S U B D I V I D E D



SCALE - 1" = 60'

NOTE:  
Each lot subject to 5' aerial overhang  
Easement across rear or lot parallel and  
adjacent to the alley.  
Indicates Corner of this Subdivision  
Indicates Easement each side of property  
line for Drainage and Public Utilities  
Lots 107 thru 165 inclusive to be used for  
Commercial purposes only.  
Indicates Easement for Pole Anchor

### DEDICATION

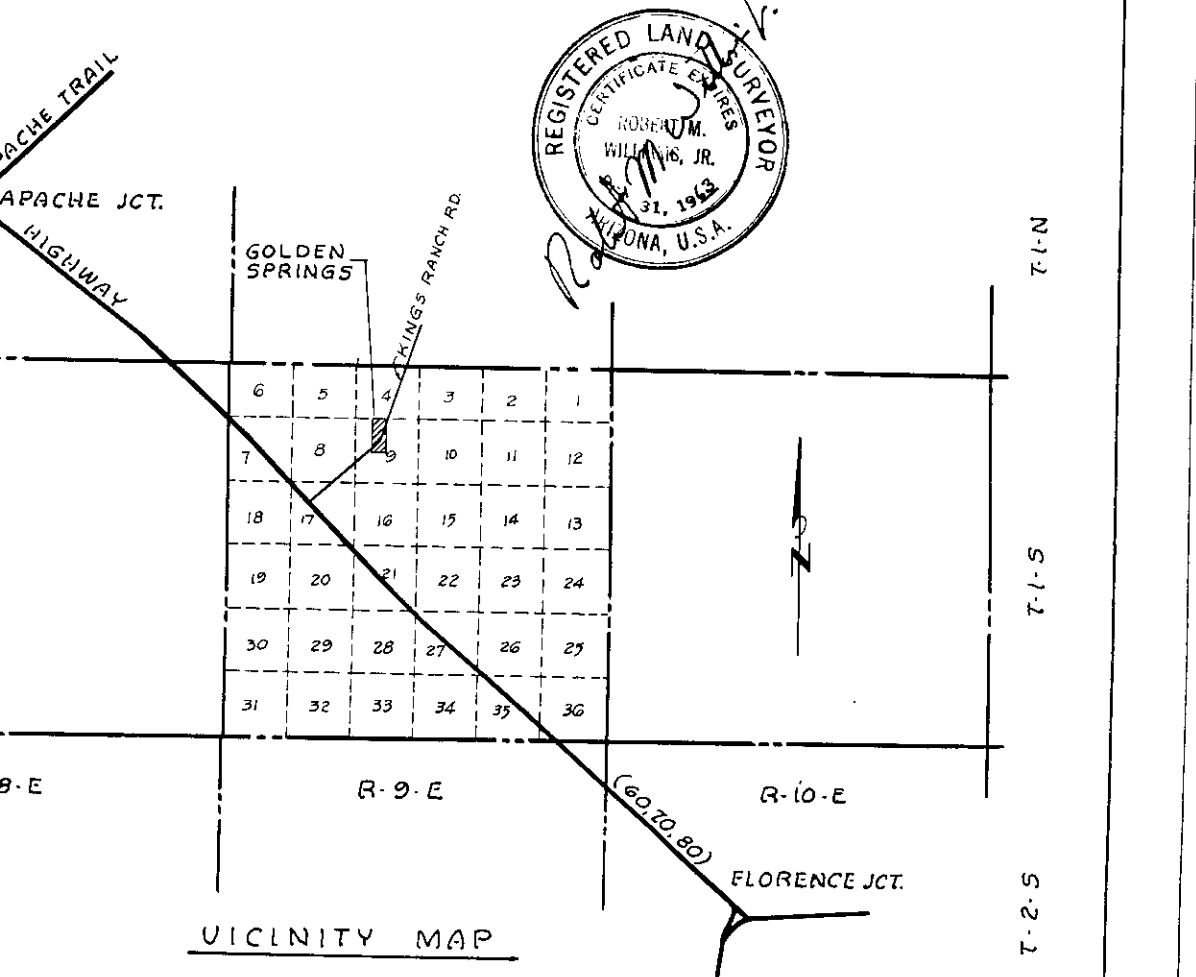
State of Arizona )  
County of Pinal ) S.S.  
Know All Men By These Presents:  
That the Central Title and Trust Company  
Arizona Corporation as Trustee, has subdivided  
under the name of GOLDEN SPRINGS,  
a subdivision of a portion of the N 1/2 of  
Section 9, T. 1 S., R. 9 E., G. & S. R. B. & M., Pinal County, Arizona,  
as shown platted hereon and hereby publishes this  
plat and for the plat of said GOLDEN SPRINGS,  
sets forth the location and gives the dimensions of  
the lots, tracts, alleys and streets constituting same  
and hereby dedicates to the public for use as such  
the streets and alleys as shown on said plat and that  
each lot, each tract and each street shall be known  
by the number, letter or name given to each respec-  
tively, and that the plat and the above described  
premises, easements are dedicated to the use shown  
herein.  
In witness whereof, the Central Title and Trust  
Company, as Trustee, has hereunto caused its  
Corporate name to be signed and its Corporate  
Seal to be affixed and the same to be attested  
by the signing forces of the officers thereof duly  
authorized.

CENTRAL TITLE AND TRUST COMPANY-TRUSTEE  
By: *John D. Smith* Attest: *Charles A. Gurnea*  
Exec. Vice Pres. Secretary

ACKNOWLEDGEMENT  
State of Arizona )  
County of Pinal ) S.S.  
On this 11th day of Nov., 1963 before  
me the undersigned officer, personally appeared  
JOHN D. SMITH and CHARLES A. GURNEA,  
who acknowledged themselves to be President  
and Assistant Secretary, respectively, of Central  
Title and Trust Company, a corporation, and acknowl-  
edged that they as such officers, respectively, being  
duly authorized so to do executed the foregoing instrument  
for the purposes therein contained by signing the name  
of the corporation, as Trustee, by themselves, as such  
officers respectively.  
In witness whereof I hereunto set my hand  
and official seal.  
*Notary Public*  
My Commission Expires: 12/16/69

APPROVALS  
Plat approved as to form Section 9-476 ARS  
this 11th day of Nov., 1963, but not as to require-  
ments as to county highways on file in the office of  
the County Engineer.  
*Walter J. Smith* PINAL COUNTY ENGINEER  
*Charles A. Gurnea* PINAL COUNTY SANITARIAN  
*Charles A. Gurnea* PINAL COUNTY PLANNING DIRECTOR  
*Arthur C. Gurnea* PINAL COUNTY BOARD OF SUPERVISORS  
By: *Arthur C. Gurnea* Attest: *Spencer C. Gurnea*  
Chairman Secretary

CERTIFICATE  
This is to certify that the survey and sub-  
division of the premises described and platted  
hereon was made under my direction during the  
month of September, 1963, all lot corners and street  
controls have been monumented in the field.  
*Robert M. Williams*  
REGISTERED LAND SURVEYOR



Collar, Williams & White Engineering, Inc.  
2922 N. 70th ST.  
SCOTTSDALE, ARIZONA  
JOB NO. 630408-A

U N S U B D I V I D E D

U N S U B D I V I D E D