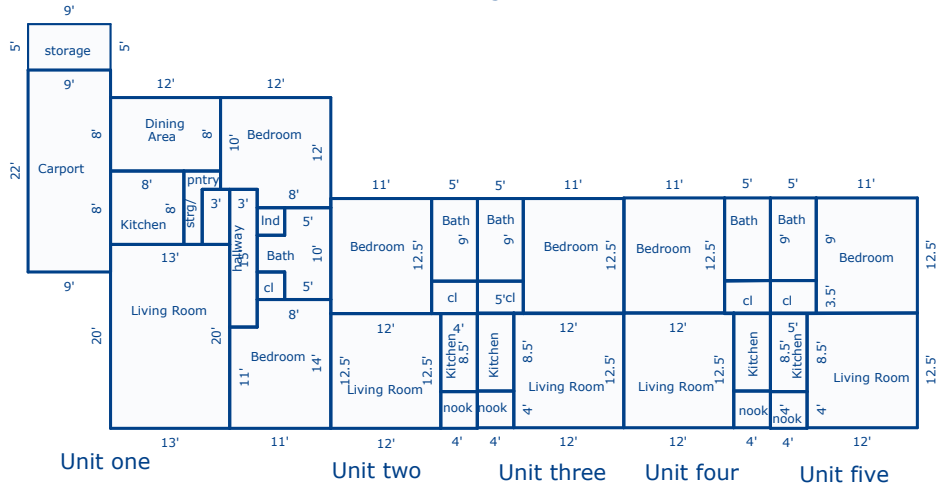


## Building Sketch

Borrower	n/a			
Property Address	3636 E Verde Ln			
City	Phoenix	County Maricopa	State AZ	Zip Code 85018
Lender/Client	Gerchick Real Estate			

All figures and measurements are approximate.

Building "A" units 1-5



Sketch by Apex Sketch v5 Standard™

Comments:

AREA CALCULATIONS SUMMARY			
Code	Description	Net Size	Net Totals
GLA1	Unit one living room	260.00	
	Unit one kitchen	64.00	
	Unit one dining area	96.00	
	Unit one bedroom 2	136.00	
	Unit one bedroom 1	145.00	
	Unit one hallway	45.00	
	Unit one bathroom	62.00	
	Unit one laundry	9.00	
	Unit one closet	9.00	
	Unit one closet	18.00	
	Unit one pantry/strg	20.00	
	Unit two bedroom	137.50	
	Unit two living room	150.00	
	Unit two bathroom	45.00	
	Unit two nook	16.00	
	Unit two kitchen	34.00	
	Unit two closet	17.50	
	Unit three kitchen	34.00	
	Unit three nook	16.00	
	Unit 3 living room	150.00	
	Unit 3 closet	17.50	
	Unit 3 bathroom	45.00	
	Unit 3 bedroom	137.50	
	Unit 4 living room	150.00	
	Unit 4 bedroom	137.50	
	Unit 4 bathroom	45.00	
	Unit four kitchen	34.00	
	Unit four closet	17.71	
	Unit four nook	16.00	
	<b>Net LIVABLE Area</b>	<b>(rounded)</b>	<b>2464</b>

LIVING AREA BREAKDOWN			
Breakdown		Subtotals	
Unit one living room			
20.0 x	13.0		260.00
Unit one kitchen			
8.0 x	8.0		64.00
Unit one dining area			
8.0 x	12.0		96.00
Unit one bedroom 2			
12.0 x	10.0		120.00
2.0 x	8.0		16.00
Unit one bedroom 1			
11.0 x	11.0		121.00
3.0 x	8.0		24.00
Unit one hallway			
15.0 x	3.0		45.00
Unit one bathroom			
3.0 x	5.0		15.00
3.0 x	5.0		15.00
4.0 x	8.0		32.00
Unit one laundry			
3.0 x	3.0		9.00
Unit one closet			
3.0 x	3.0		9.00
3.0 x	6.0		18.00
Unit one pantry/strg			
4.0 x	2.0		8.00
6.0 x	2.0		12.00
Unit two bedroom			
11.0 x	12.5		137.50
<b>2</b>			<b>1462.21</b>
<b>42 Items</b>		<b>(rounded)</b>	<b>2464</b>