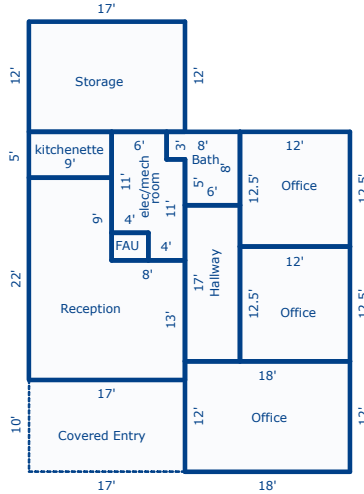


## Building Sketch

Borrower	n/a		
Property Address	1119 W Indian School Rd		
City	Phoenix	County Maricopa	State AZ      Zip Code 85013
Lender/Client	Gerchick Real Estate		

All figures and measurements are approximate.



Sketch by Apex Sketch v5 Standard™

Comments:

AREA CALCULATIONS SUMMARY			
Code	Description	Net Size	Net Totals
GBA1	Storage area	204.00	
	kitchenette	45.00	
	Reception	302.00	
	Office	216.00	
	Office	150.00	
	Office	150.00	
	Bath	54.00	
	elec/mech room	94.00	
	Hallway	102.00	
	FAU	12.00	1329.00
P/P	Covered Entry	170.00	170.00
<b>Net BUILDING Area</b>		(rounded)	<b>1329</b>

BUILDING AREA BREAKDOWN			
Breakdown			Subtotals
<b>Storage area</b>			
17.0	x	12.0	204.00
<b>kitchenette</b>			
5.0	x	9.0	45.00
<b>Reception</b>			
9.0	x	9.0	81.00
13.0	x	17.0	221.00
<b>Office</b>			
18.0	x	12.0	216.00
12.5	x	12.0	150.00
12.5	x	12.0	150.00
<b>Bath</b>			
8.0	x	3.0	24.00
5.0	x	6.0	30.00
<b>elec/mech room</b>			
6.0	x	3.0	18.00
3.0	x	4.0	12.00
8.0	x	8.0	64.00
<b>Hallway</b>			
6.0	x	17.0	102.00
<b>FAU</b>			
4.0	x	3.0	12.00
<b>14 Items</b>		(rounded)	<b>1329</b>