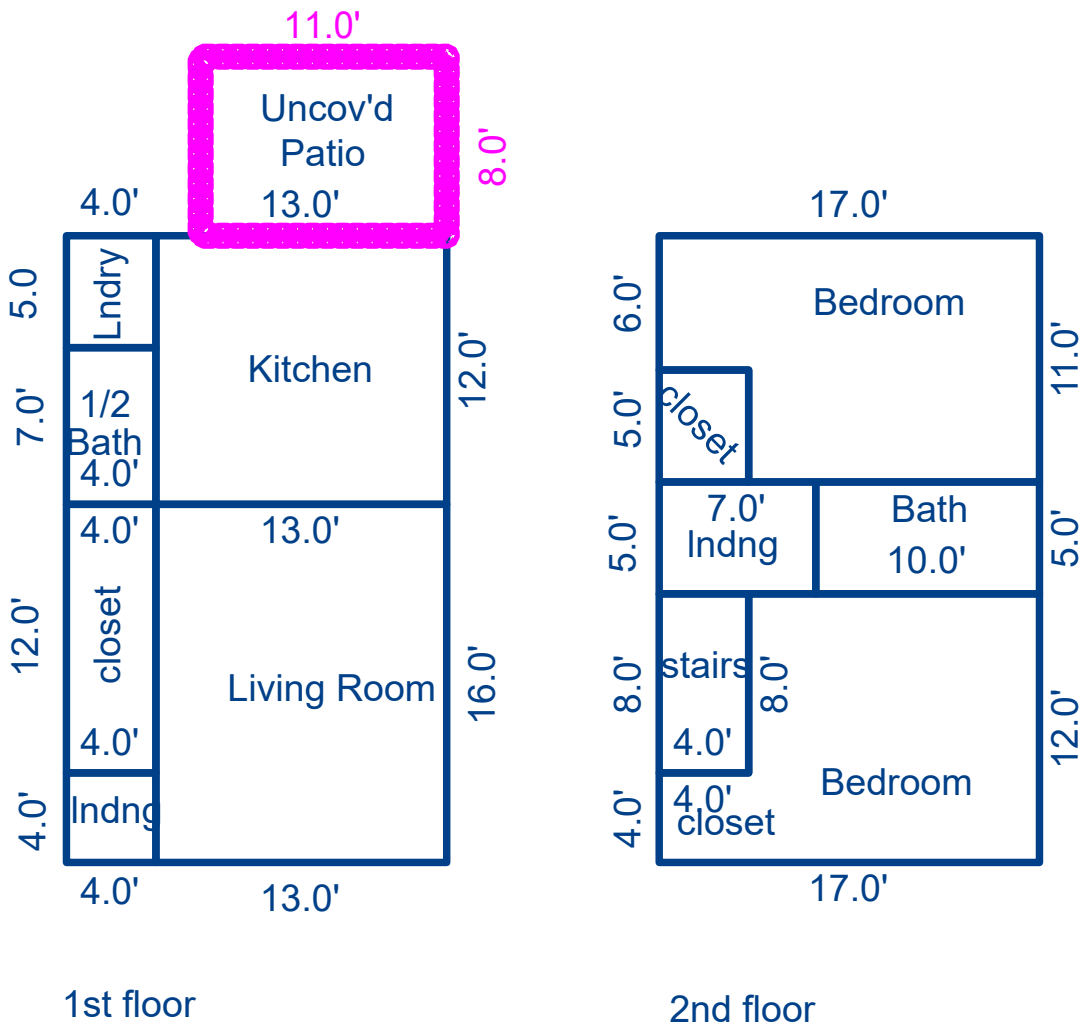


Building Sketch

Borrower	n/a						
Property Address	2431 W Tracy Ln Unit 2						
City	Phoenix	County	Maricopa	State	AZ	Zip Code	85032
Lender/Client	Gerchick Real Estate						

All figures and measurements are approximate



1st floor

2nd floor

Sketch by ApexSketch

AREA CALCULATIONS SUMMARY						AREA CALCULATIONS BREAKDOWN				
Code	Description	Factor	Net Size	Perimeter	Net Totals	Name	Base x	Height x	Width =	Area
GLA1	Living Room	1.0	208.0	58.0	476.0	Living Room	16.0 x	13.0	=	208.0
	Kitchen	1.0	156.0	50.0		Kitchen	13.0 x	12.0	=	156.0
	Laundry	1.0	20.0	18.0		Laundry	5.0 x	4.0	=	20.0
	1/2 bath	1.0	28.0	22.0		1/2 bath	7.0 x	4.0	=	28.0
	closet	1.0	48.0	32.0		closet	12.0 x	4.0	=	48.0
	landing	1.0	16.0	16.0		landing	4.0 x	4.0	=	16.0
	GLA2	Bedroom	1.0	167.0		56.0	476.0	Bedroom	17.0 x	6.0
Bathroom		1.0	50.0	30.0	Bathroom	13.0 x		5.0	=	65.0
Bedroom		1.0	172.0	58.0	Bedroom	17.0 x		12.0	=	156.0
stairs		1.0	32.0	24.0	stairs	8.0 x		4.0	=	32.0
closet		1.0	20.0	18.0	closet	4.0 x		4.0	=	16.0
landing		1.0	35.0	24.0	landing	7.0 x		5.0	=	35.0
P/P		Uncovered Patio	1.0	88.0	38.0	88.0				
	Net LIVABLE	cnt	12 (rounded)		952	14 total items			(rounded)	952

© ILOOKABOUT (US) Inc. dba Apex Software