

4/0

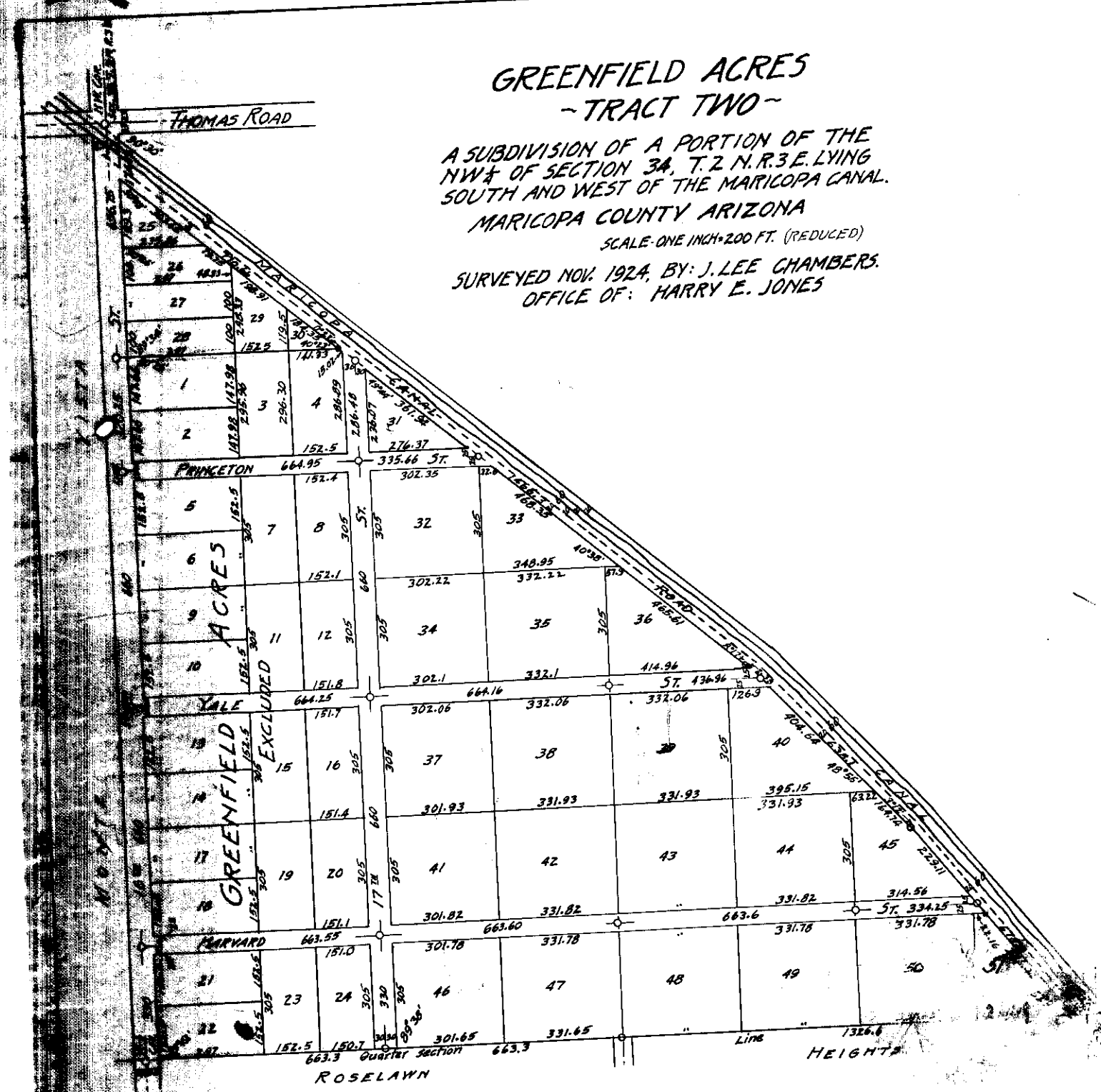
Rec'd
W.R.F.

GREENFIELD ACRES - TRACT TWO -

A SUBDIVISION OF A PORTION OF THE
NW 1/4 OF SECTION 34, T. 2 N. R. 3 E. LYING
SOUTH AND WEST OF THE MARICOPA CANAL.
MARICOPA COUNTY ARIZONA

SCALE - ONE INCH = 200 FT. (REDUCED)

SURVEYED NOV. 1924, BY: J. LEE CHAMBERS.
OFFICE OF: HARRY E. JONES



DEDICATION

CITY OF ARIZONA }
COUNTY OF MARICOPA } 55.

KNOW ALL MEN BY THESE PRESENTS: That we the undersigned T.H. Greenfield and
 wife, Max I. Greenfield and Bonnie E. Greenfield, his wife, being the owners of all of that
 portion of the NW 1/4 of Section 34, T. 2 N. R. 3 E. Gila and Salt River Base and Meridian, lying South and West
 of the Maricopa Canal, except Lots 1 to 3 and 5 to 24 inclusive of Greenfield Acres as shown on the map
 recorded in Book 13 of Maps at Page 9 in the Maricopa County Recorders office; Have caused the said
 premises to be surveyed, subdivided and platted as shown hereon which said premises so shown shall
 hereafter be known as GREENFIELD ACRES TRACT TWO and that the plat hereon shown accurately
 shows the location, gives the number and dimensions of each lot and is a true and correct plat of
 the same and the streets and roads are hereby dedicated to the