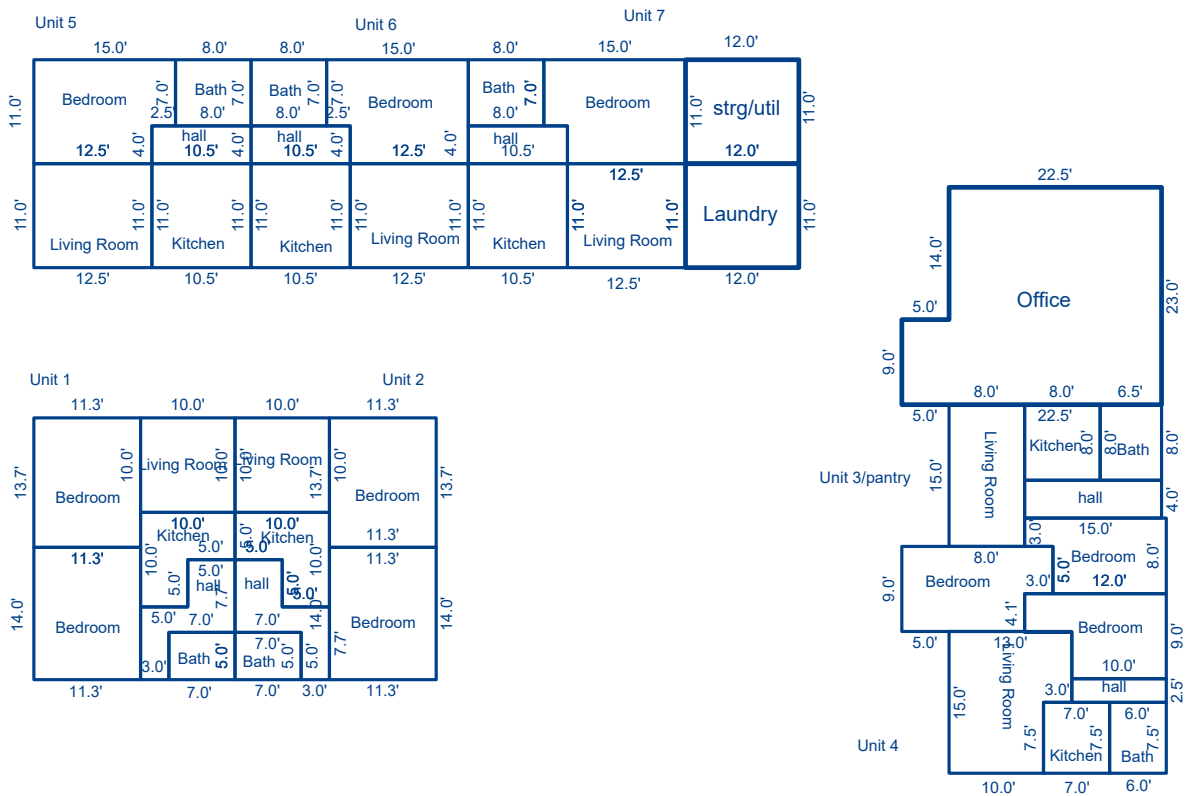


Building Sketch

| | | | | | | | |
|------------------|----------------------|--------|----------|-------|----|----------|-------|
| Borrower | n/a | | | | | | |
| Property Address | 8939 N 8th St | | | | | | |
| City | Phoenix | County | Maricopa | State | AZ | Zip Code | 85020 |
| Lender/Client | Gerchick Real Estate | | | | | | |

All figures and measurements are approximate



Sketch by ApexSketch

| AREA CALCULATIONS SUMMARY | | | | | | AREA CALCULATIONS BREAKDOWN | | | | | |
|---------------------------|--------------------|--------|----------|--------------|--------------------|-----------------------------|--------|----------|-----------|-------|-------|
| Code | Description | Factor | Net Size | Perimeter | Net Totals | Name | Base x | Height x | Width = | Area | |
| GBA1 | Laundry | 1.0 | 132.0 | 46.0 | 826.5 | Laundry | 12.0 x | 11.0 = | | 132.0 | |
| | Office | 1.0 | 562.5 | 101.0 | | strg/util | 12.0 x | 11.0 = | | 132.0 | |
| | strg/util | 1.0 | 132.0 | 46.0 | | Unit 7 bedroom | 15.0 x | 7.0 = | | 105.0 | |
| GLA1 | Unit 2 living roo | 1.0 | 100.0 | 40.0 | Unit 7 living room | 12.5 x | 4.0 = | | 50.0 | | |
| | Unit 2 bedroom | 1.0 | 154.8 | 50.0 | Unit 7 living room | 12.5 x | 11.0 = | | 137.5 | | |
| | Unit 2 bedroom | 1.0 | 158.2 | 50.6 | Unit 7 kitchen | 11.0 x | 10.5 = | | 115.5 | | |
| | Unit 2 bathroom | 1.0 | 35.0 | 24.0 | Unit 7 bathroom | 8.0 x | 7.0 = | | 56.0 | | |
| | Unit 2 kitchen | 1.0 | 75.0 | 40.0 | Unit 7 hallway | 10.5 x | 4.0 = | | 42.0 | | |
| | Unit 2 hallway | 1.0 | 67.0 | 45.4 | Unit 6 bedroom | 12.5 x | 11.0 = | | 137.5 | | |
| | Unit 4 living roo | 1.0 | 172.5 | 56.0 | Unit 6 living room | 7.0 x | 2.5 = | | 17.5 | | |
| | Unit 1 hallway | 1.0 | 67.0 | 45.4 | Unit 6 living room | 12.5 x | 11.0 = | | 137.5 | | |
| | Unit 4 kitchen | 1.0 | 52.5 | 29.0 | Unit 6 bathroom | 8.0 x | 7.0 = | | 56.0 | | |
| | Unit 4 bedroom | 1.0 | 132.0 | 50.0 | Unit 6 kitchen | 11.0 x | 10.5 = | | 115.5 | | |
| | Unit 4 bedroom | 1.0 | 110.5 | 48.0 | Unit 6 hallway | 10.5 x | 4.0 = | | 42.0 | | |
| | Unit 4 hallway | 1.0 | 25.0 | 25.0 | Unit 5 kitchen | 11.0 x | 10.5 = | | 115.5 | | |
| | Unit 3/pantry livi | 1.0 | 120.0 | 46.0 | Unit 5 bathroom | 8.0 x | 7.0 = | | 56.0 | | |
| | 25 addl items | | | | 41 addl items | | | | | | |
| | Net LIVABLE | cnt | | 38 (rounded) | | 3,635 | | | (rounded) | | 4,461 |
| | Net BUILDING | cnt | | 3 (rounded) | | 827 | | | | | |